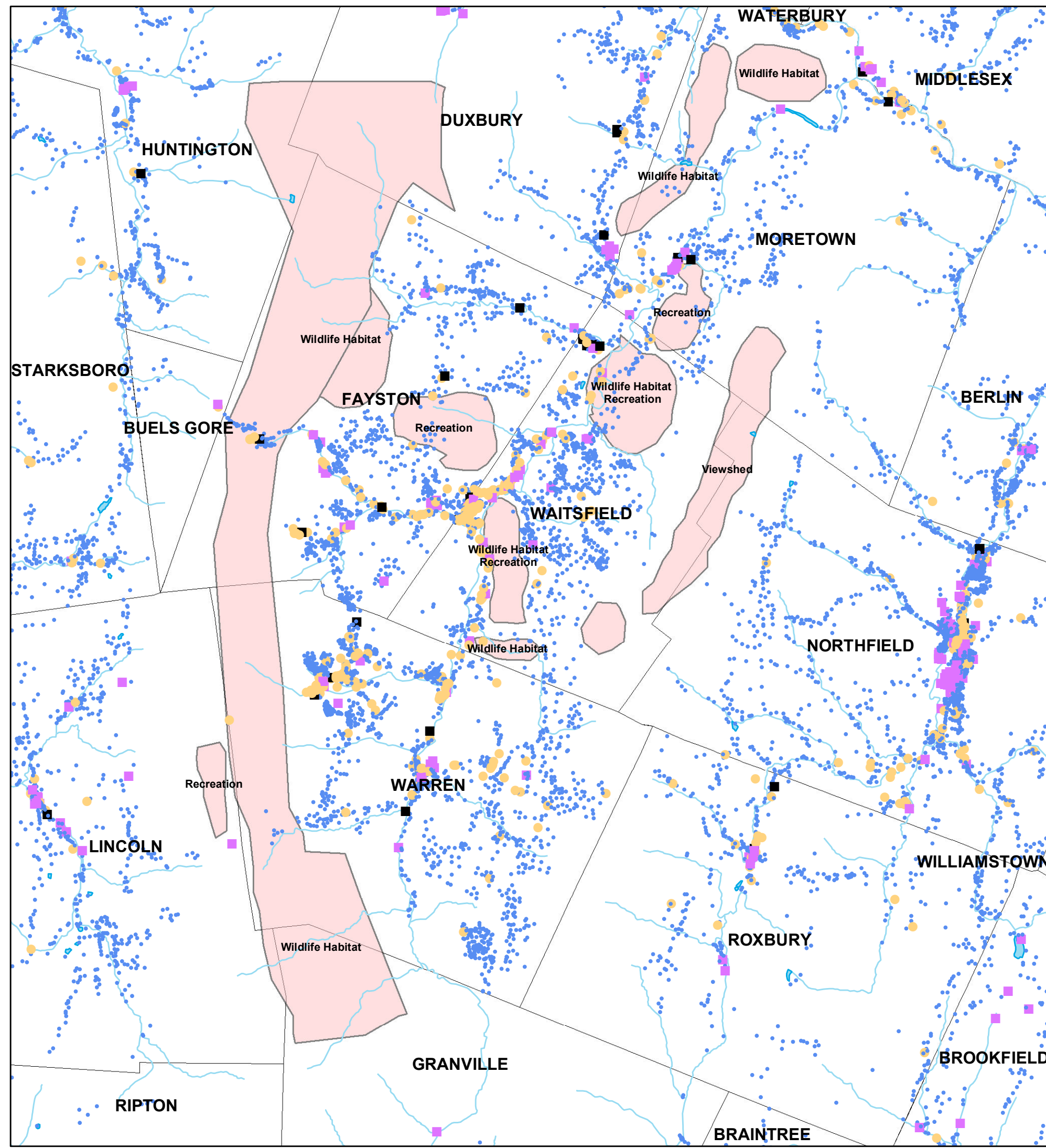
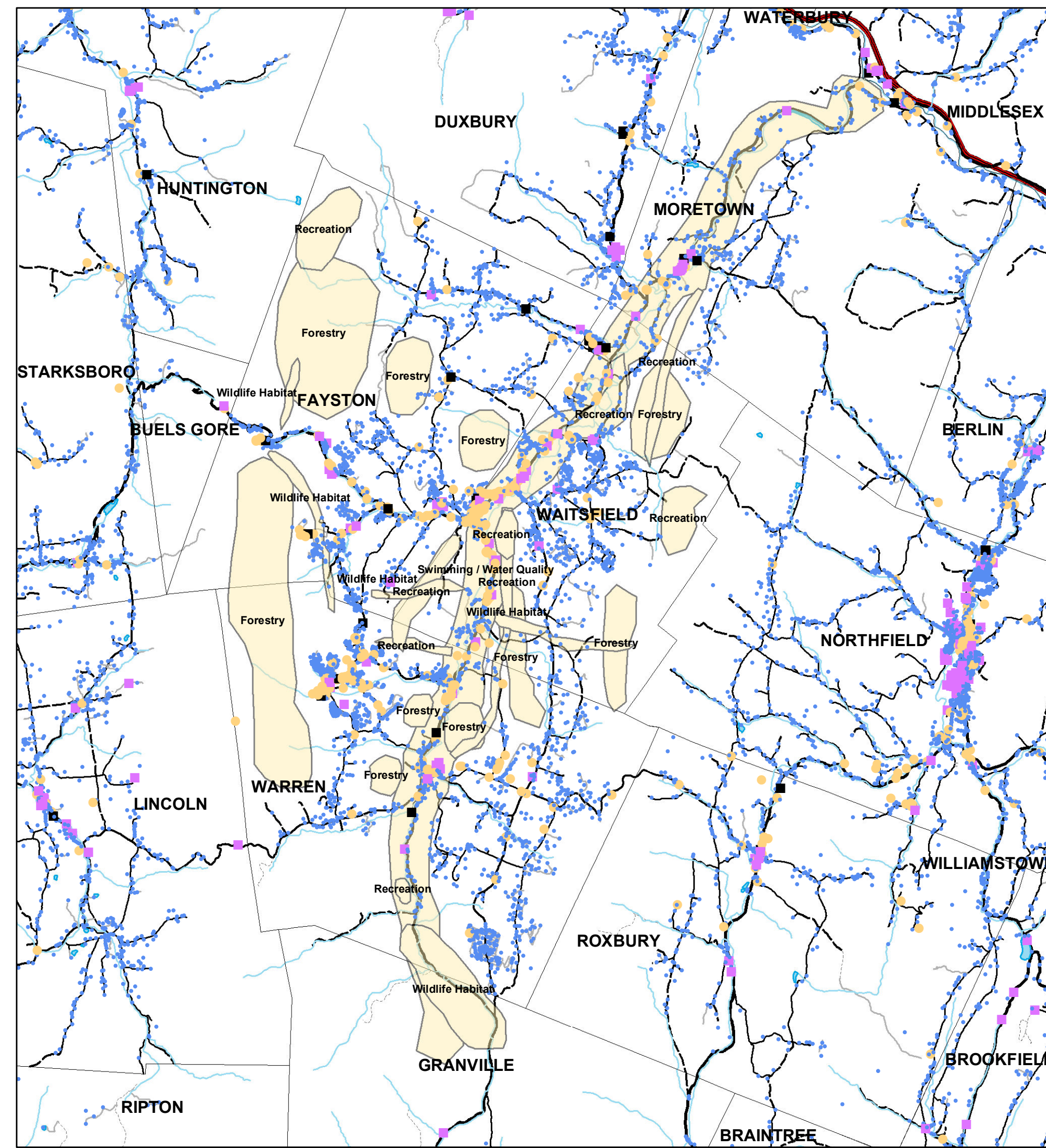


# MAD RIVER VALLEY COMMUNITY VALUES

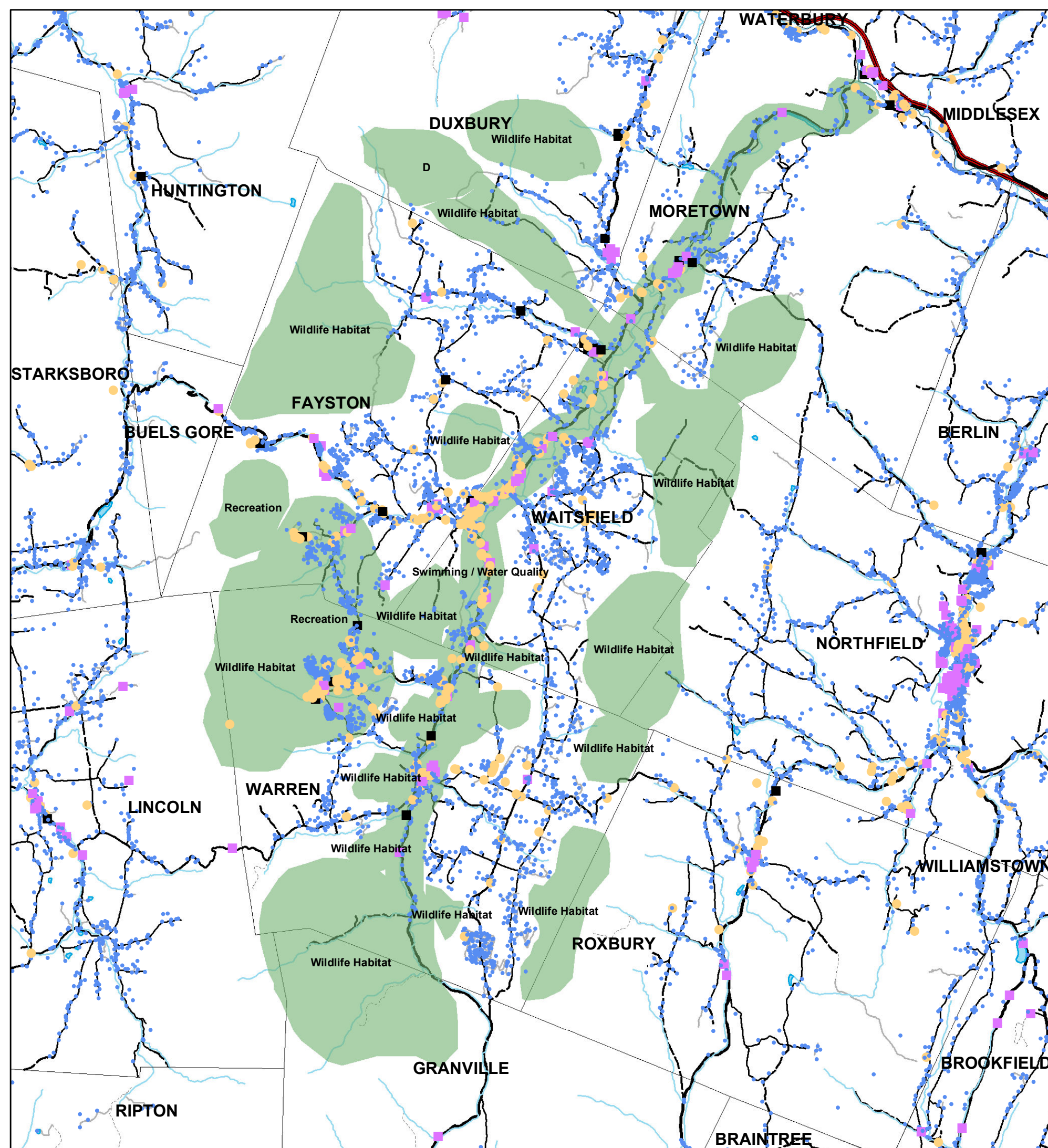
## BREAKOUT TEAM MAPS



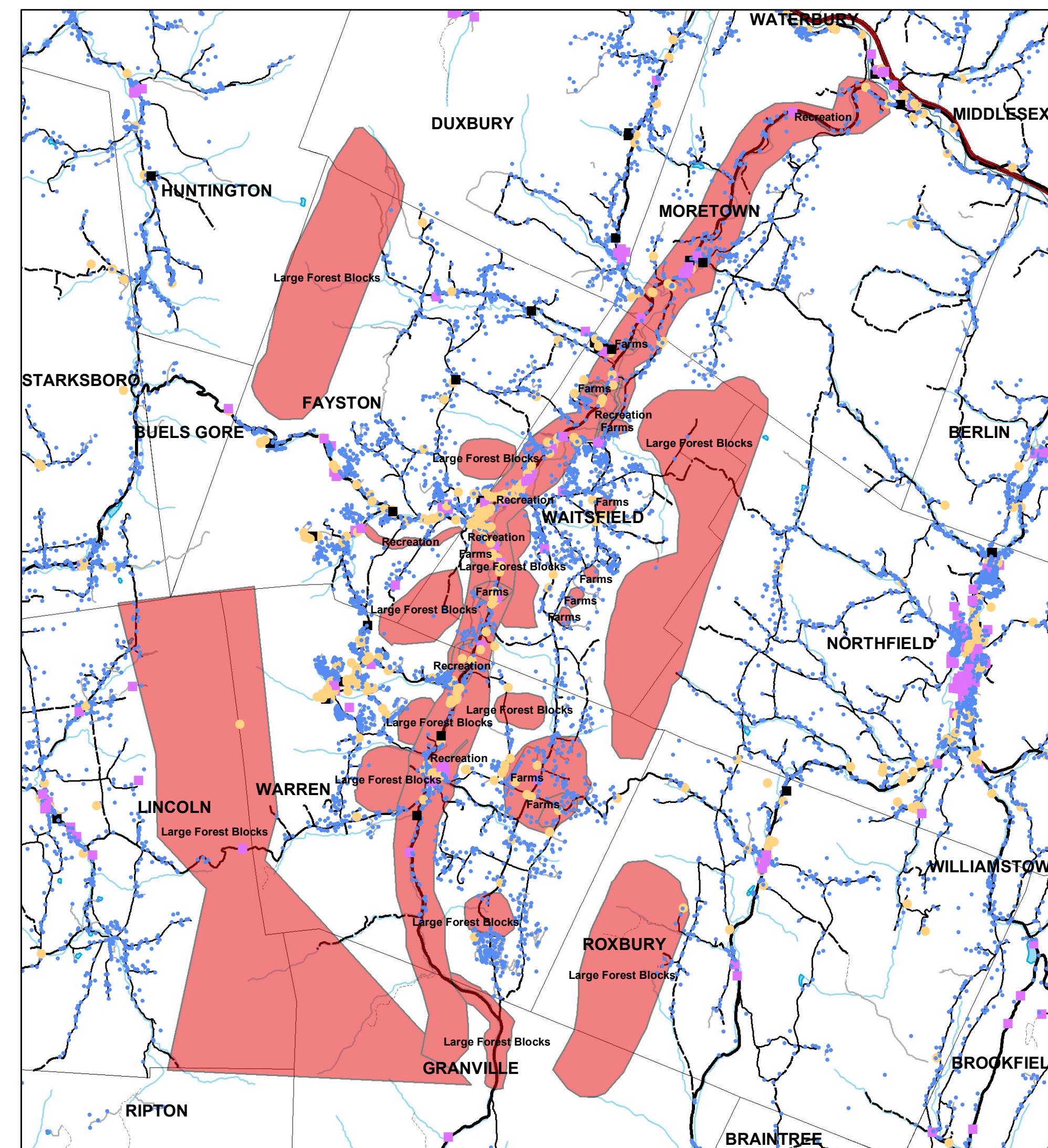
RED TEAM



YELLOW TEAM

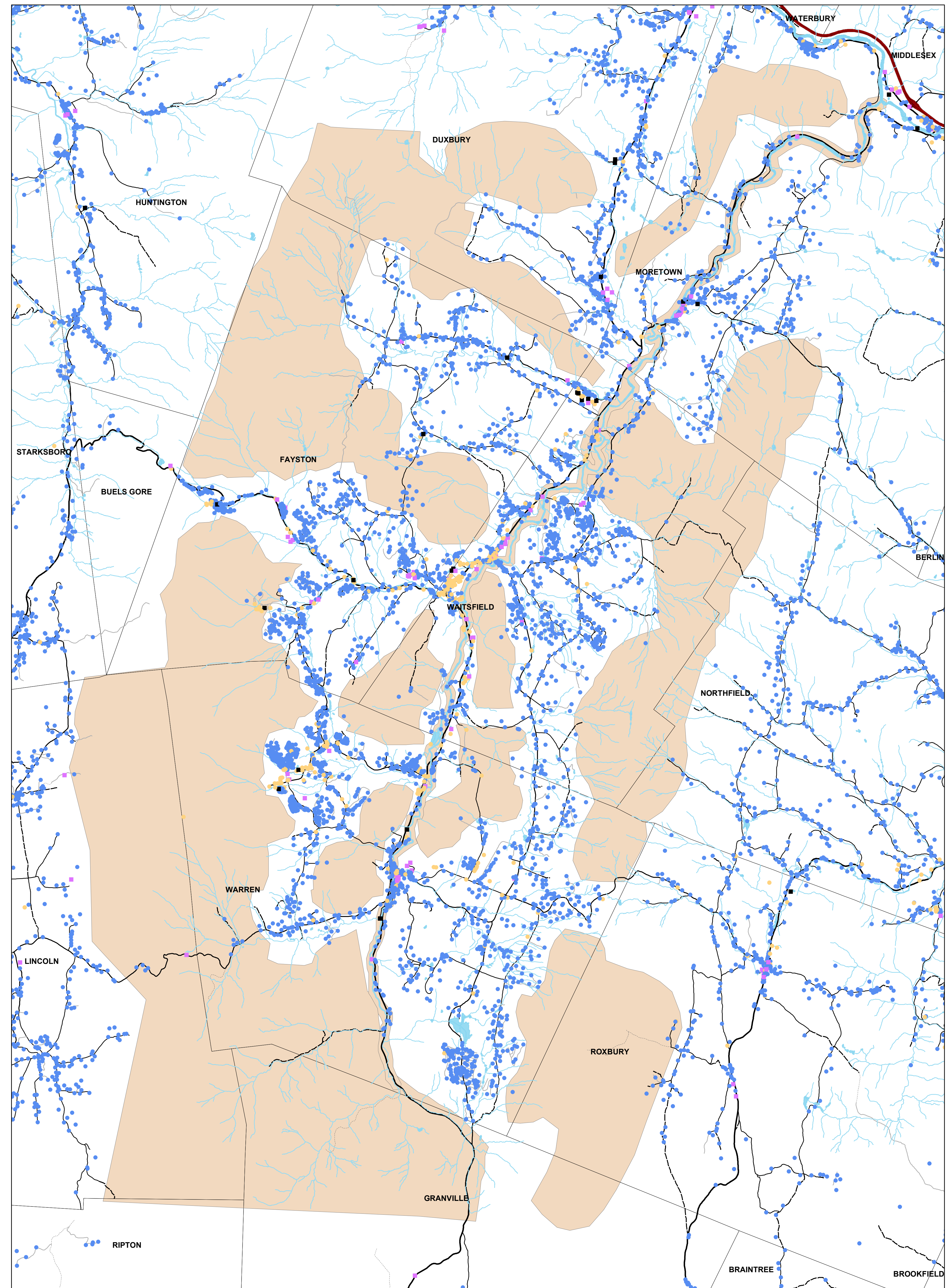


GREEN TEAM



RED-RED TEAM

## COMPILED COMMUNITY VALUE MAP

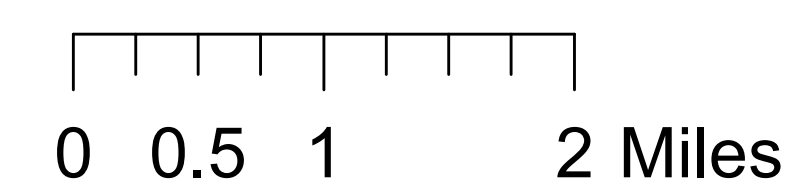
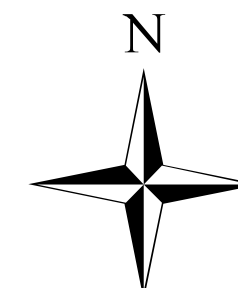


On April 7th 2008, residents from Moretown, Waitsfield, Fayston, & Warren convened to discuss their values with respect to natural resources. The question "what do you love about living in the Mad River Valley?" was answered through small group discussion and then mapped by delineating areas that the small group felt are important for these different values or uses. The four small group maps are shown at left and the compiled Community Values Map is at right.

This values forum and other coordination work was completed by the Forests, Wildlife, and Communities project, a collaborative effort of Vermont Natural Resource Council, Audubon Vermont, Vermont Coverts and the Northern Forest Alliance.

Data Sources:  
Vermont Center for Geographic Information

Vermont State Plane Projection  
North American Datum 1983  
Map by Jens Hilke  
Vermont Fish & Wildlife Department



- |                        |                 |              |                      |
|------------------------|-----------------|--------------|----------------------|
| Community Value Blocks | Lakes           | <b>Roads</b> | Class Three          |
| Buildings              | Streams         | Interstate   | Class Four           |
| Commercial             | Town Boundaries | Primary      | National Forest Road |
| Industrial; Utility    |                 | Class Two    | Private Road         |
| Civic                  |                 |              |                      |
| Residential            |                 |              |                      |